

**CERTIFICATE OF SURVEY**

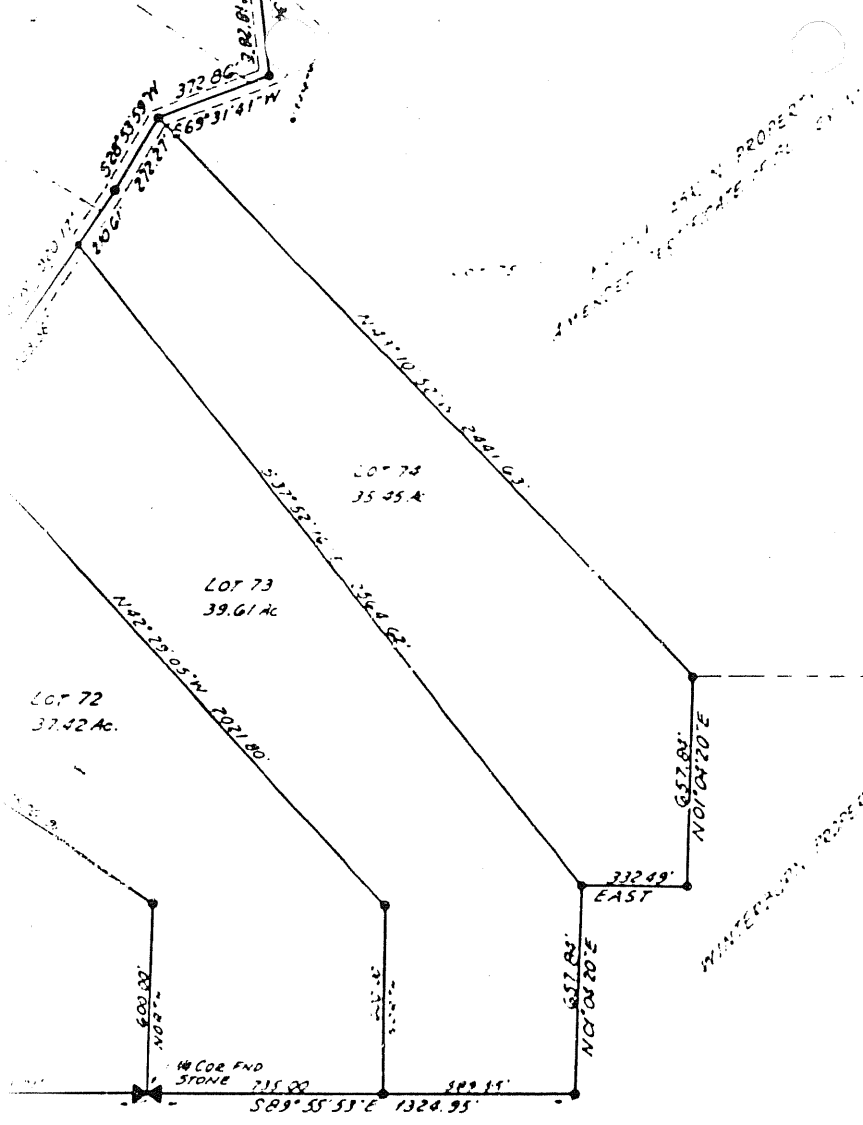
I, William H. Tangen, of the County of Hill, State of Montana, do solemnly swear that the survey of a tract of land located in the SW 1/4 of Sec 36, T11N, R2W, S36E, Hill County, Montana, and shown upon the attached plat, was made in accordance with the provisions of Section 11-38-09 through Section 11-38-12, R.C.M., 1973, effective this date, and the date of such survey was May, 1978 and the attached Certificate of Survey is in accordance with such survey.

William H. Tangen  
 WILLIAM H. TANGEN  
 HILL COUNTY, MONTANA



THE PURPOSE OF SUCH SURVEY IS TO  
 CONTAINING TWENTY-ONE (21) LOTS  
 SURVEYED FOR 500 AC.

NOTE: ALL ROAD EASEMENTS  
 TO PUBLIC USE.



ADVANCED TECHNOLOGY PROPERTY

A find of land  
 in Section 36  
 Beginning at the  
 corner of the  
 Section 36  
 and the  
 Section 35  
 and the  
 Section 34  
 and the  
 Section 33  
 and the  
 Section 32  
 and the  
 Section 31  
 and the  
 Section 30  
 and the  
 Section 29  
 and the  
 Section 28  
 and the  
 Section 27  
 and the  
 Section 26  
 and the  
 Section 25  
 and the  
 Section 24  
 and the  
 Section 23  
 and the  
 Section 22  
 and the  
 Section 21  
 and the  
 Section 20  
 and the  
 Section 19  
 and the  
 Section 18  
 and the  
 Section 17  
 and the  
 Section 16  
 and the  
 Section 15  
 and the  
 Section 14  
 and the  
 Section 13  
 and the  
 Section 12  
 and the  
 Section 11  
 and the  
 Section 10  
 and the  
 Section 9  
 and the  
 Section 8  
 and the  
 Section 7  
 and the  
 Section 6  
 and the  
 Section 5  
 and the  
 Section 4  
 and the  
 Section 3  
 and the  
 Section 2  
 and the  
 Section 1

WINTERHORN PROPERTY

THE PURPOSE OF SURVEY IS TO CREATE PARCELS OF LAND CONTAINING TWENTY (20) ACRES OR GREATER.

SURVEYED FOR FRANK ASKIN, MAY, 1978.

BB-D  
 Areawide Planning

NOTE: ALL ROAD EASEMENTS SHOWN HEREON ARE HEREBY GRANTED AND DEDICATED TO PUBLIC USE AND NO PRIVATE RESTRICTIONS MAY BE PLACED THEREON.